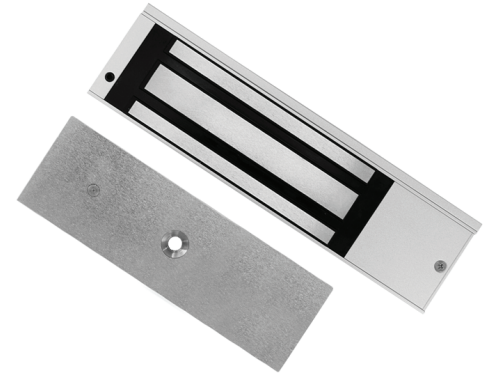


02 Series Electromagnetic Locking Range

IPIXA Security 02 Series Electromagnetic Locking Range represents reliable and cost effective Access Control solution

02 series offers locks with holding capacity of 600 lbs & 1200 lbs. The locks are equipped with sensors to remotely monitor the status of the door. All models are conveniently packaged with armature plate & fixing screws for both Metal & Wooden doors. The minimum maintenance feature & 3 years limited warranty on all models enables this range to be ideal for commercial applications.



AEL0241

Product Specifications

Finish	Satin Chrome
Holding Force	1200 lbs
Operating Voltage	12 / 24 VDC
Cycle Testing	500,000 Cycles
Current Draw	0.5 A @ 12VDC ; 0.250 A @ 24 VDC
Door Status Monitoring	Inbuilt Door Status Monitoring With Output
Operating Temperature	- 20°C - 60°C
Operating Humidity	0 - 95% Relative humidity
Certifications	CE
Use	Suitable for Single Leaf Door
Features	Tamper Resistant Fixing LED Visual Indication Magnetic Bond Intact / Hall Sensor Automatic Voltage Surge Protection Circuitry

Brackets:

AEL0244 - Z&L Bracket for AEL0241 & AEL0242 Locks



**No Residual
Magnetism**

**Cycle Tested
500,000**



IPIXA SECURITY LIMITED
Kemp House, 160 City Road,
London, EC1V 2NX,
United Kingdom
ipixa.co.uk