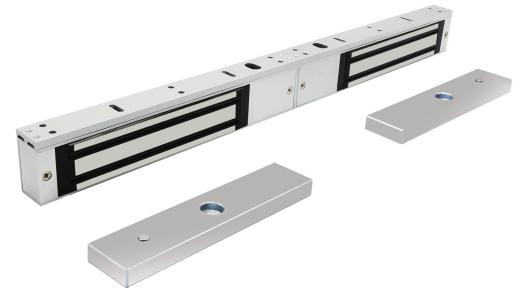


02 Series Electromagnetic Locking Range

IPIXA Security 02 Series Electromagnetic Locking Range represents reliable and cost effective Access Control solution

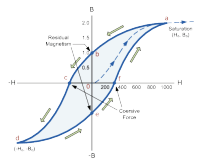
02 series offers locks with holding capacity of 600 lbs & 1200 lbs. The locks are equipped with sensors to remotely monitor the status of the door. All models are conveniently packaged with armature plate & fixing screws for both Metal & Wooden doors. The minimum maintenance feature & 3 years limited warranty on all models enables this range to be ideal for commercial applications.



AEL0232

Product Specifications

Finish	: Satin Chrome
Holding Force	: 800 lbs
Operating Voltage	: 12 / 24 VDC
Cycle Testing	: 500,000 Cycles
Current Draw	: 430 mA @ 12VDC ; 290 mA @ 24 VDC
Door Status Monitoring	: Inbuilt Door Status Monitoring with output
Operating Temperature	: - 20°C - + 60°C
Operating Humidity	: 0 - 95% Relative humidity
Certifications	: CE
Features	<ul style="list-style-type: none"> ■ Tamper Resistant Fixing ■ LED Visual Indication ■ Back EMF Prevention ■ Magnetic Bond Intact / Hall Sensor ■ Automatic Voltage Surge Protection Circuitry



No Residual Magnetism

Cycle Tested 500,000



Brackets:

AEL0234 - Z&L Bracket for AEL0231 & AEL0232 Locks

AEL0235 - L Bracket for AEL0231 & AEL0232 Locks



IPIXA SECURITY LIMITED
Kemp House, 160 City Road,
London, EC1V 2NX,
United Kingdom
ipixa.co.uk